

SOUTHSIDE RESIDENCE

BELFAST, BT9

PHASE
ONE



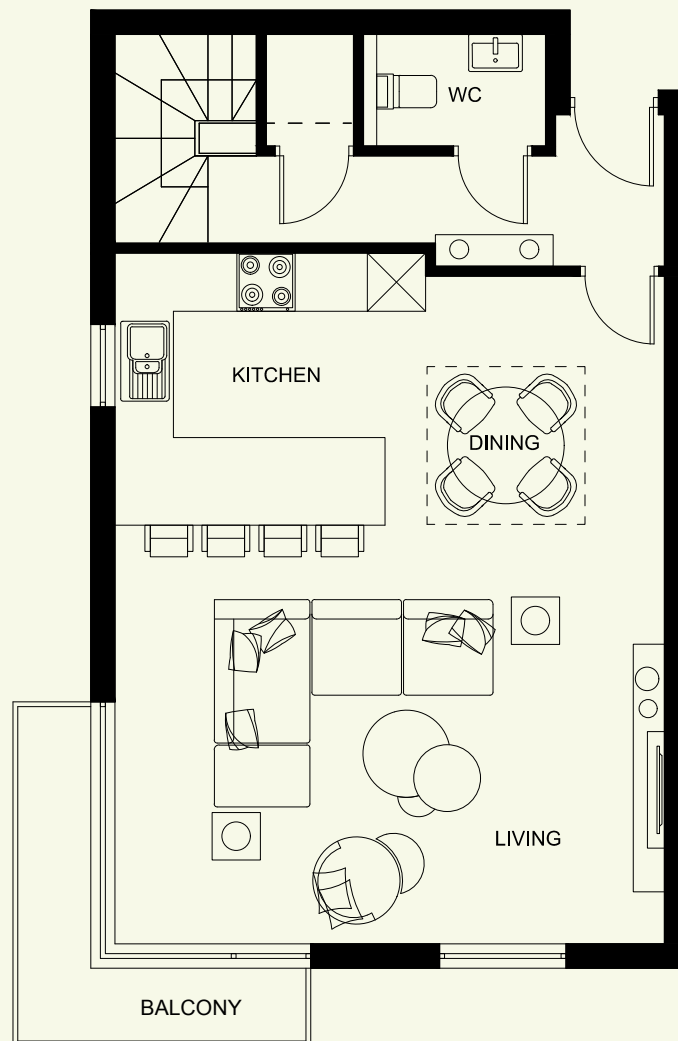
LANYON HOMES
HOUSE BUILDER

APARTMENT TYPE

CATALOGUE

TYPE A - DUPLEX

**APARTMENT NUMBER
109**

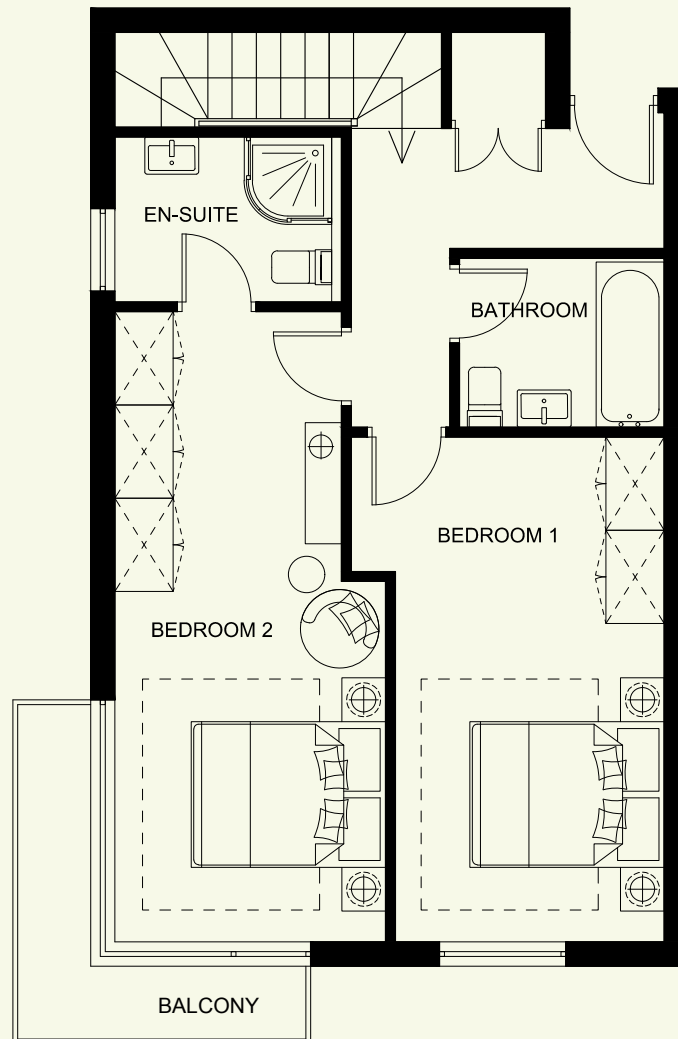


TWO BEDROOM DUPLEX - LIVING

TOTAL FLOOR AREA: 101.9 Sq M 1097 Sq Ft

TYPE A - DUPLEX

**APARTMENT NUMBER
109**

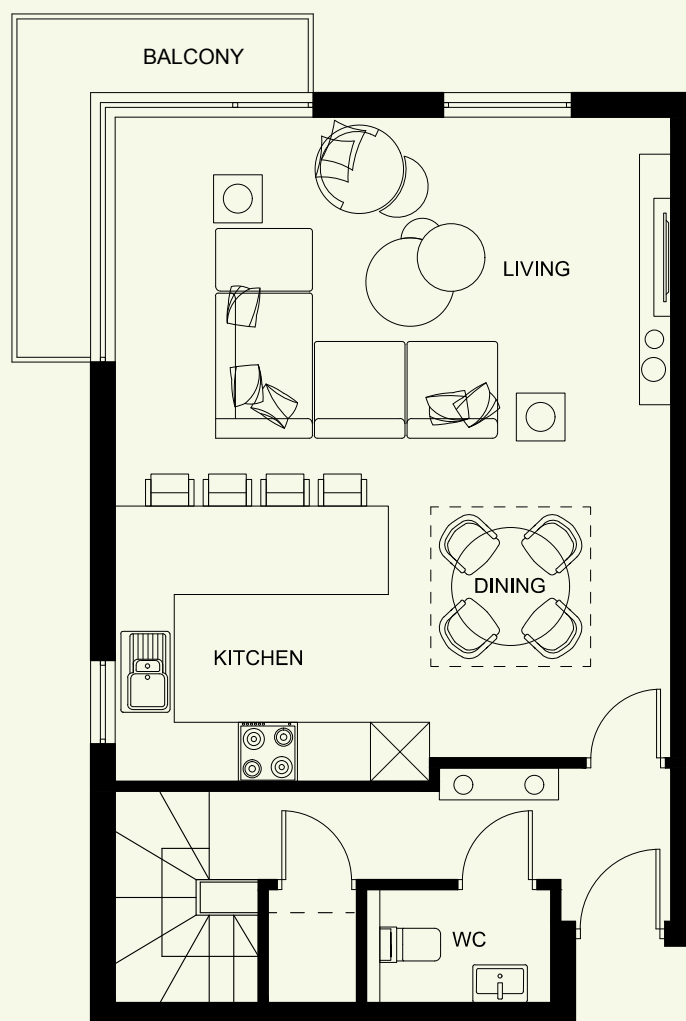


TWO BEDROOM DUPLEX - BEDROOMS

TOTAL FLOOR AREA: 101.9 Sq M 1097 Sq Ft

TYPE A1 - DUPLEX

**APARTMENT NUMBER
110**

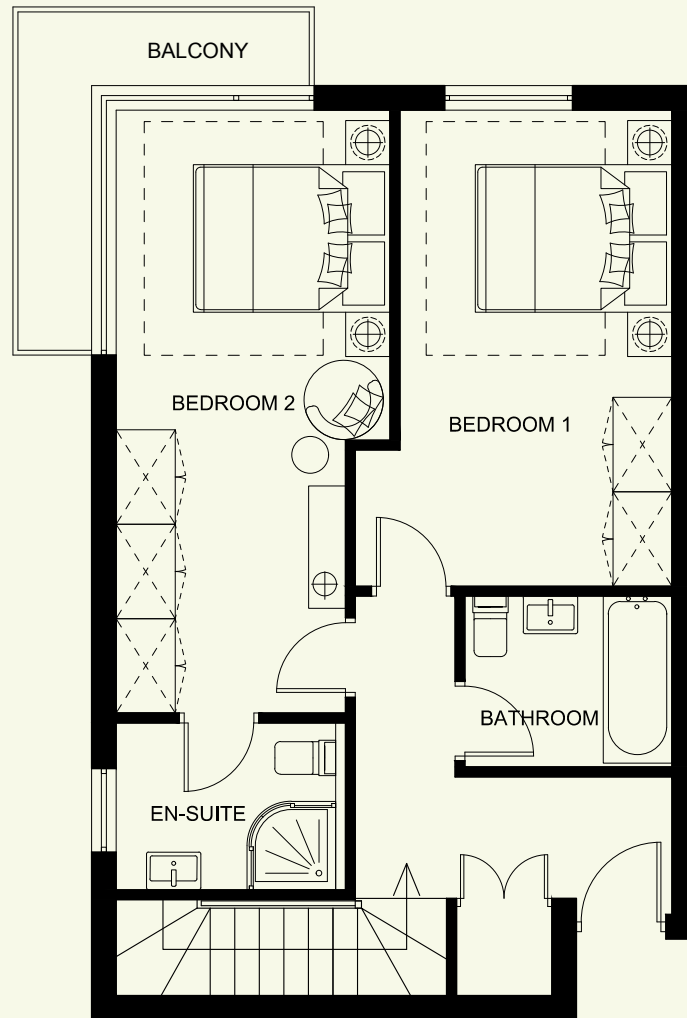


TWO BEDROOM DUPLEX - LIVING

TOTAL FLOOR AREA: 99.8 Sq M 1054 Sq Ft

TYPE A1 - DUPLEX

**APARTMENT NUMBER
110**

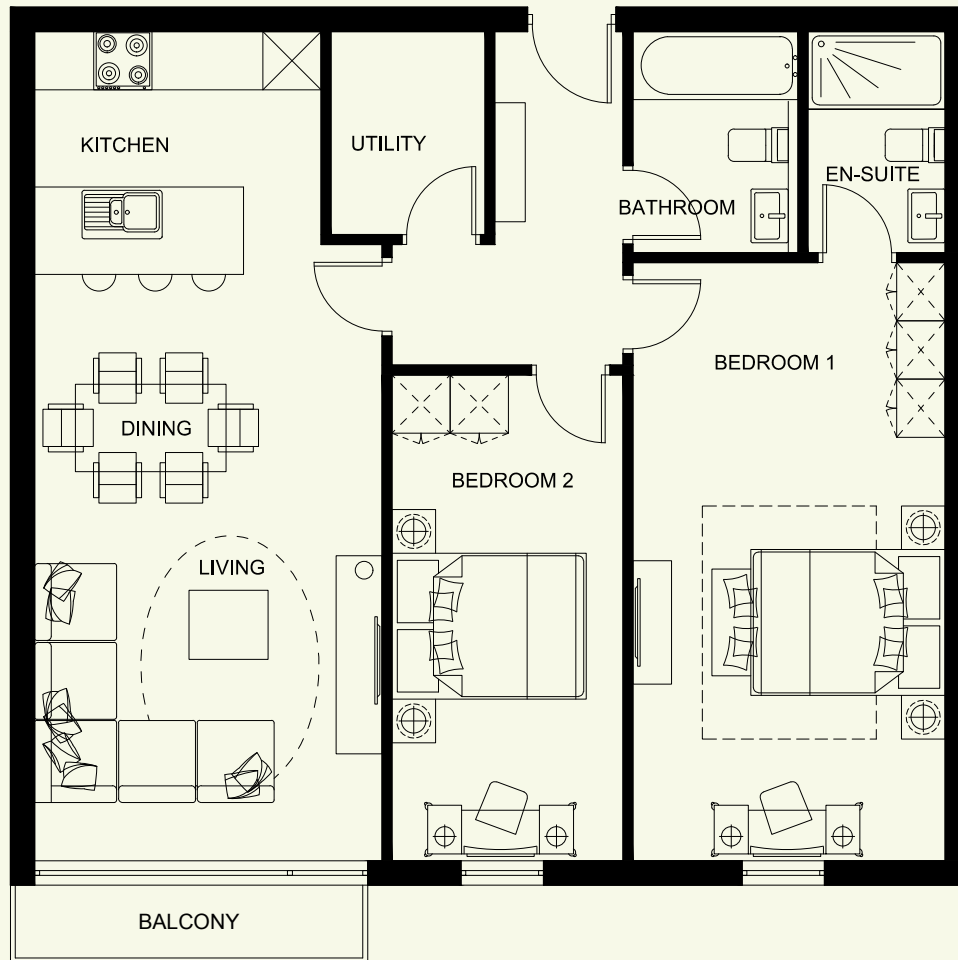


TWO BEDROOM DUPLEX - BEDROOMS

TOTAL FLOOR AREA: 99.8 Sq M 1054 Sq Ft

TYPE B

APARTMENT NUMBERS 108, 208 & 308

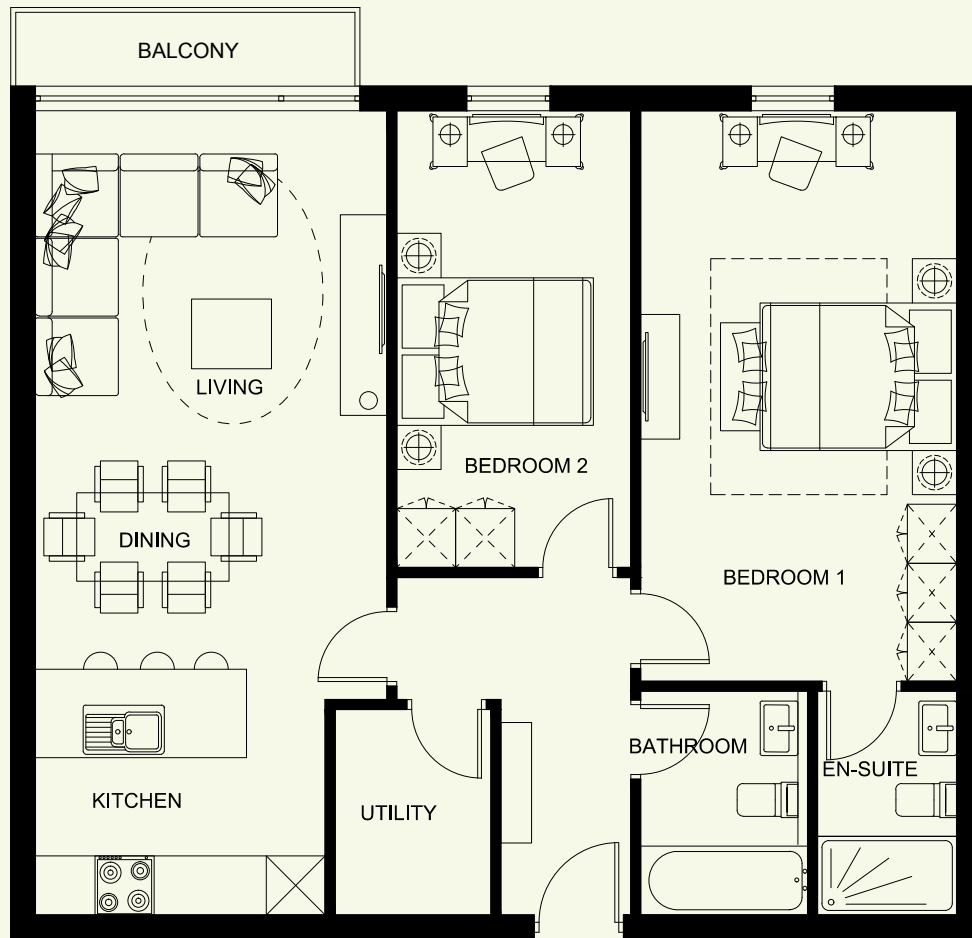


TWO BEDROOM APARTMENT

TOTAL FLOOR AREA: 79.97 Sq M 841 Sq Ft

TYPE B1

APARTMENT NUMBERS 101, 201 & 301

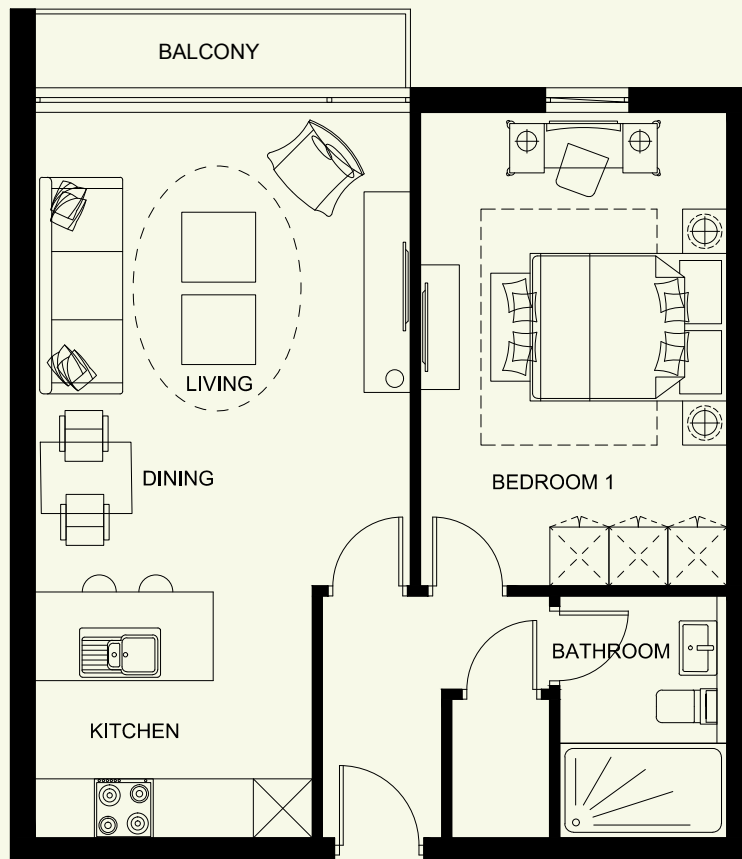


TWO BEDROOM APARTMENT

TOTAL FLOOR AREA: 76.64 Sq M 805 Sq Ft

TYPE C

APARTMENT NUMBERS 102, 202, 302 & 402

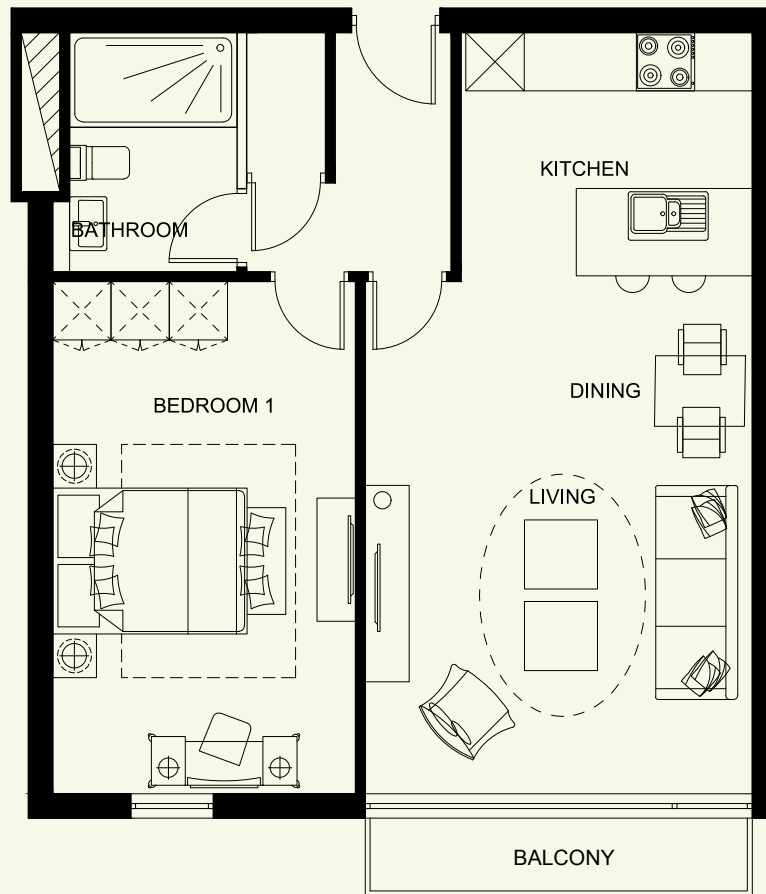


ONE BEDROOM APARTMENT

TOTAL FLOOR AREA: 51.92 Sq M 539 Sq Ft

TYPE D

APARTMENT NUMBERS
106, 206, 306, 406

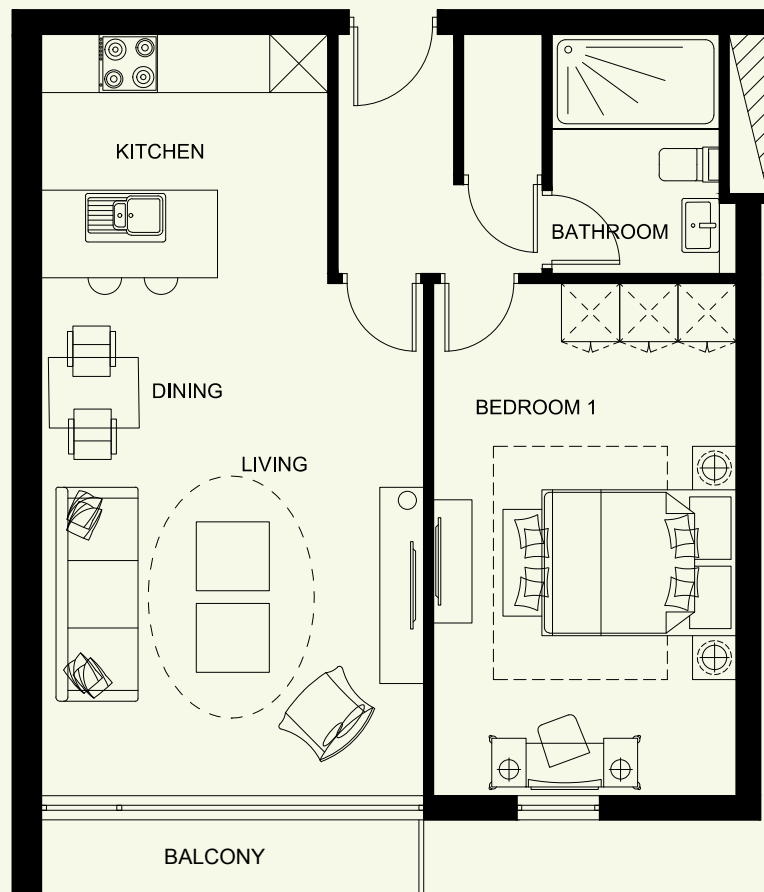


ONE BEDROOM APARTMENT

TOTAL FLOOR AREA: 55.93 Sq M 582 Sq Ft

TYPE D1

APARTMENT NUMBERS
107, 207, 307 & 407

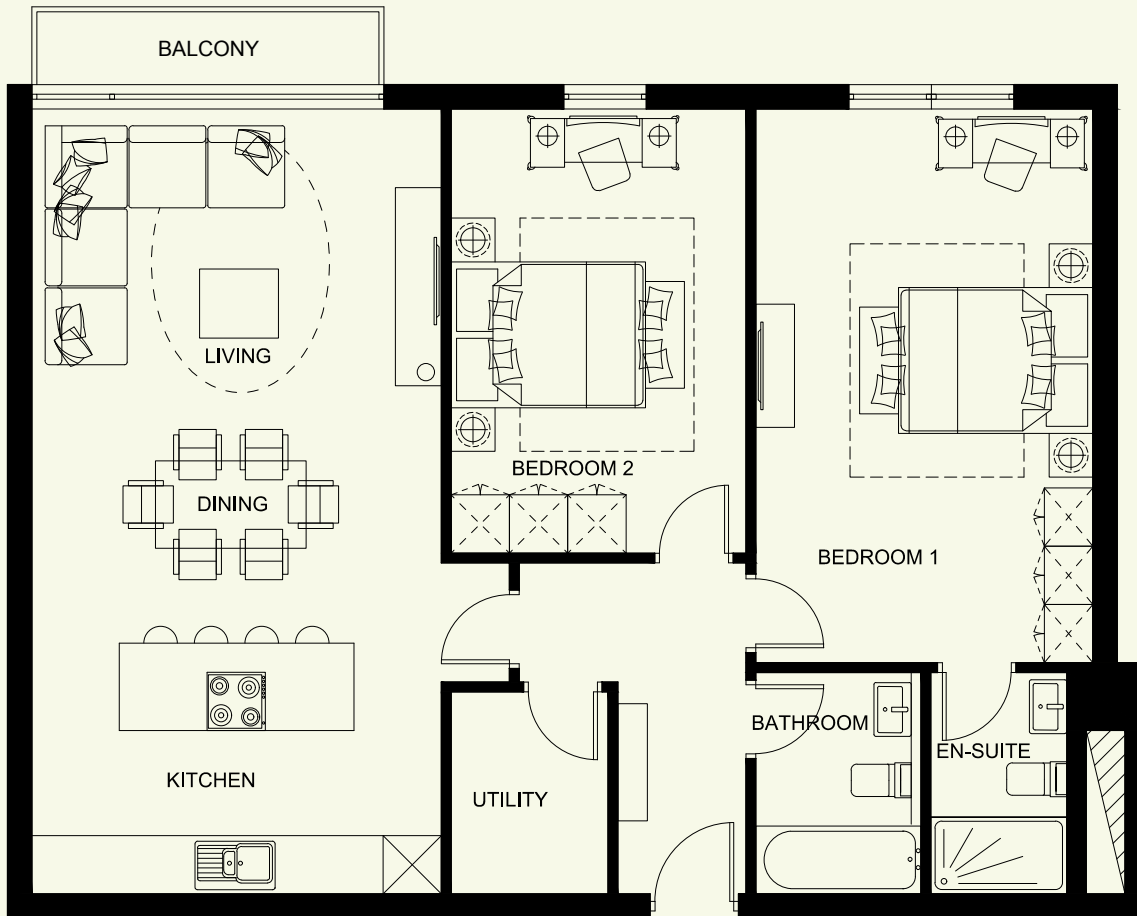


ONE BEDROOM APARTMENT

TOTAL FLOOR AREA: 54.54 Sq M 578 Sq Ft

TYPE E

APARTMENT NUMBERS
103, 203, 303, 403

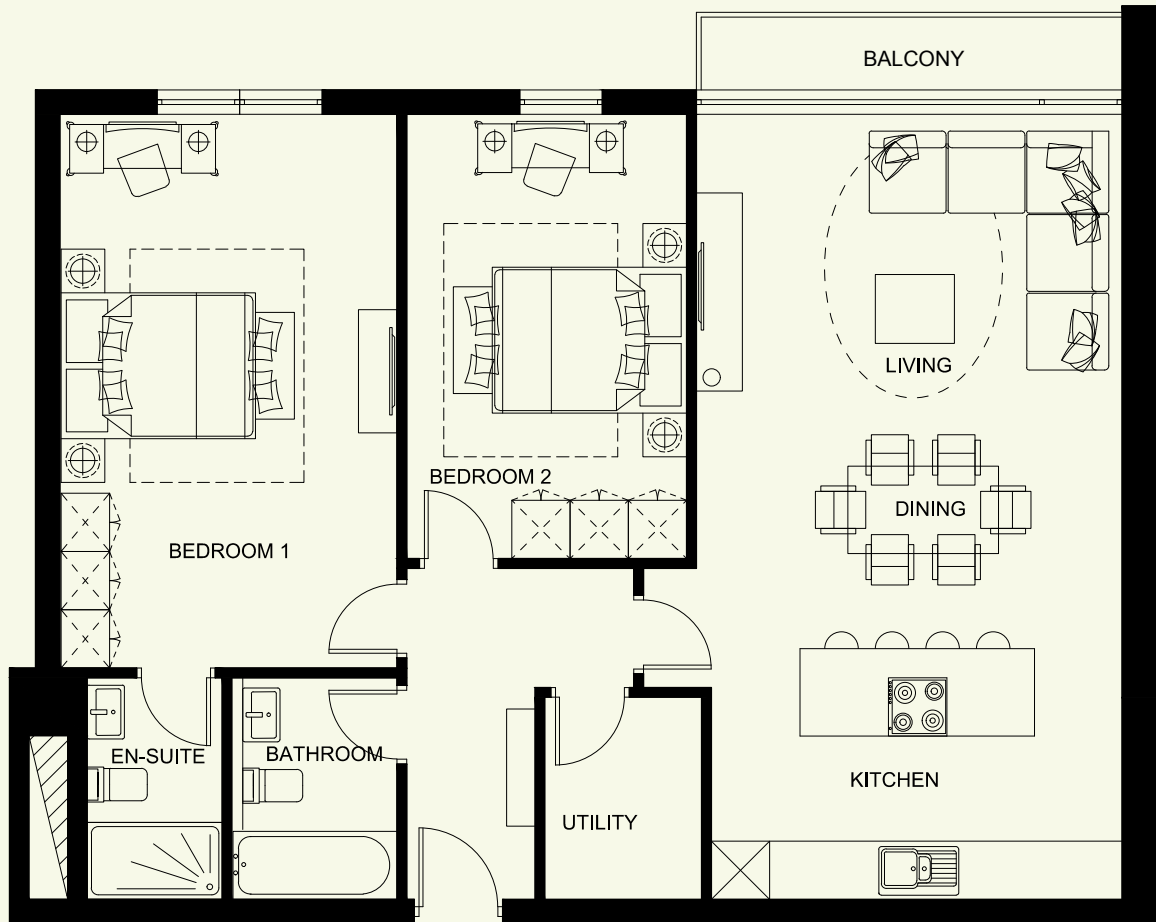


TWO BEDROOM APARTMENT

TOTAL FLOOR AREA: 87.74 Sq M 924 Sq Ft

TYPE F

APARTMENT NUMBERS 104, 204, 304 & 404

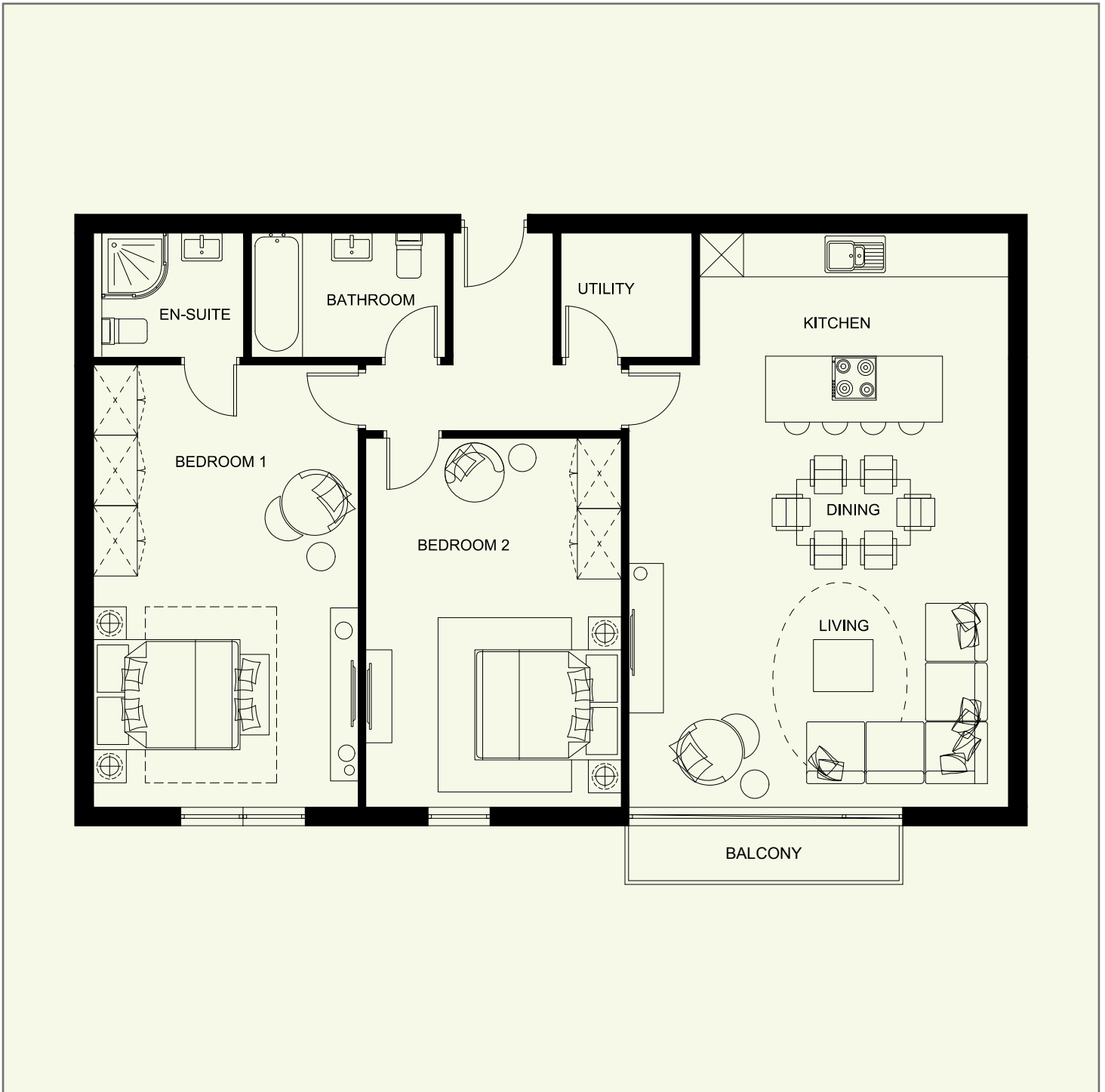


TWO BEDROOM APARTMENT

TOTAL FLOOR AREA: 87.74 Sq M 924 Sq Ft

TYPE F1

APARTMENT NUMBERS
105, 205, 305, 405

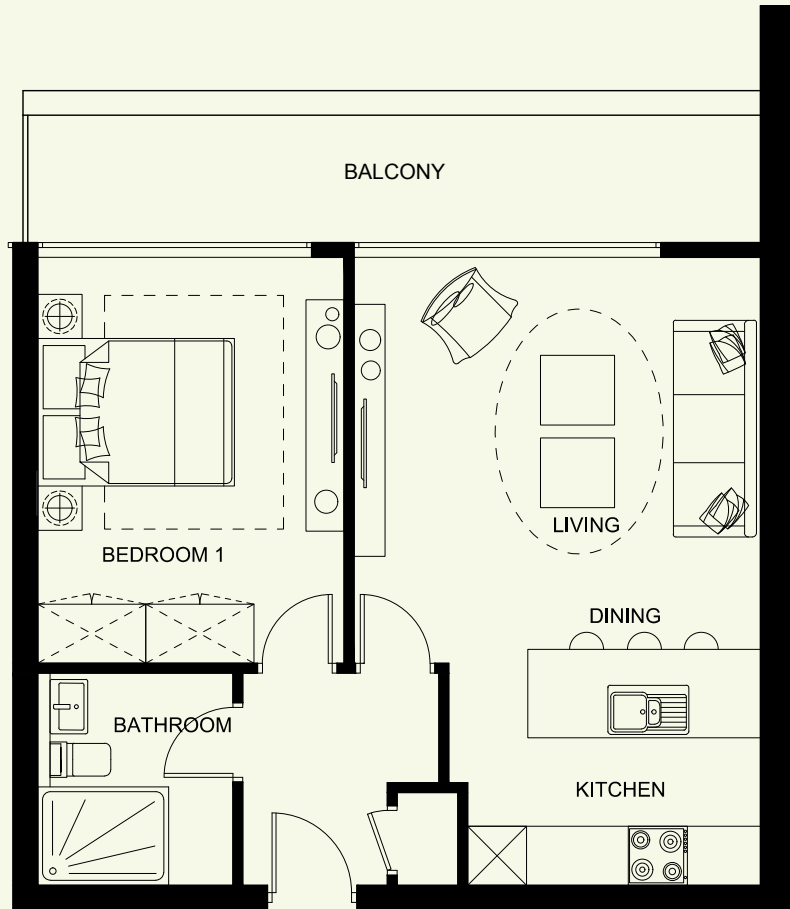


TWO BEDROOM APARTMENT

TOTAL FLOOR AREA: 97.79 Sq M 1003 Sq Ft

TYPE P5

APARTMENT NUMBER
503

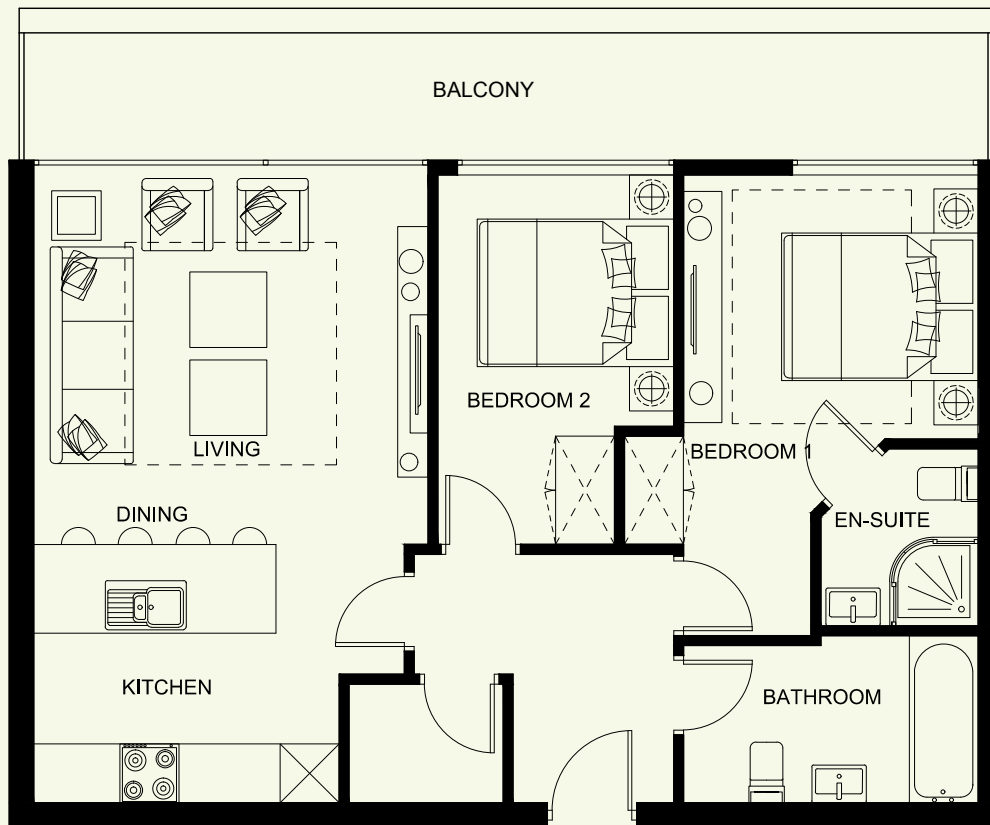


ONE BEDROOM APARTMENT

TOTAL FLOOR AREA: 46.94 Sq M 485 Sq Ft

TYPE P6

APARTMENT NUMBER
502

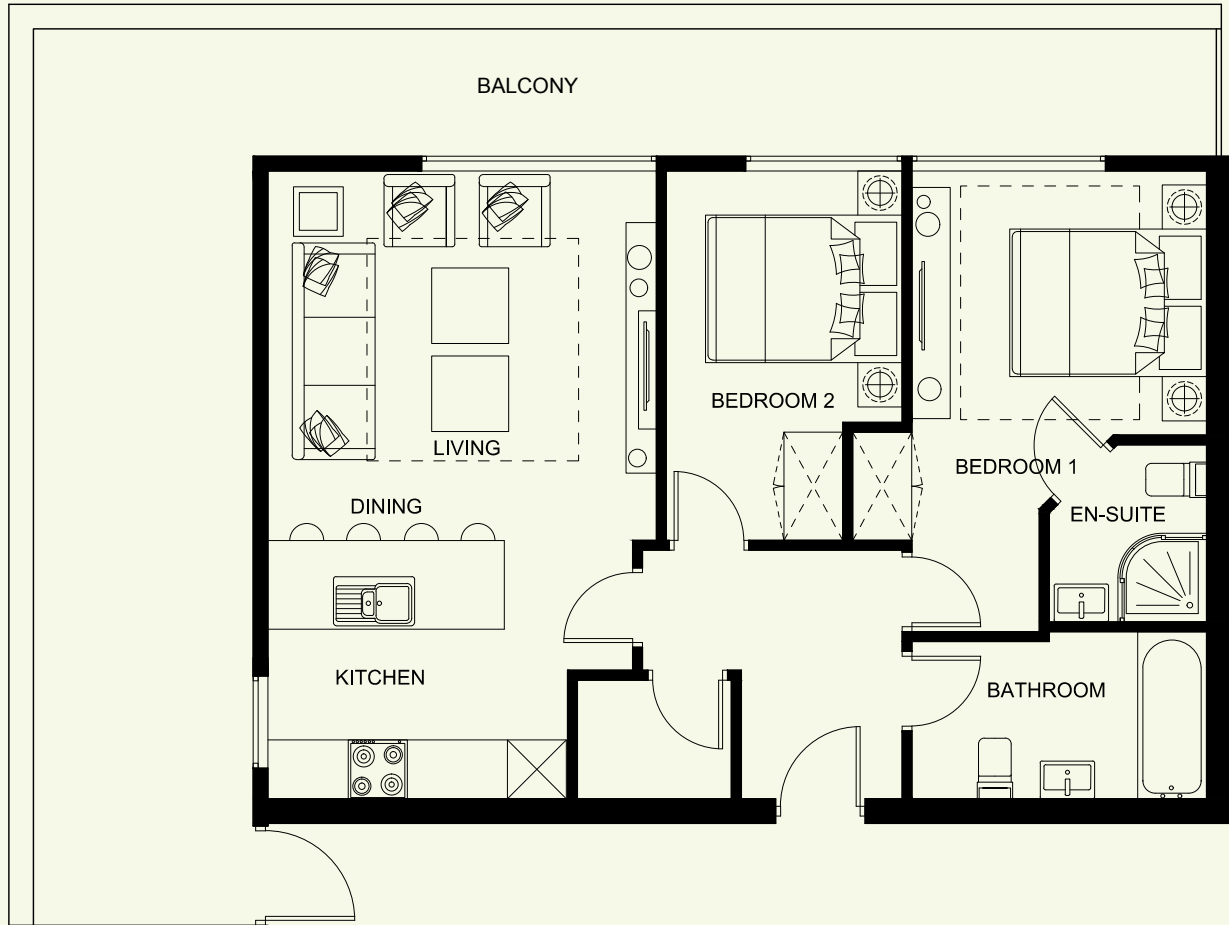


TWO BEDROOM APARTMENT

TOTAL FLOOR AREA: 61.34 Sq M 640 Sq Ft

TYPE P7

APARTMENT NUMBER
501

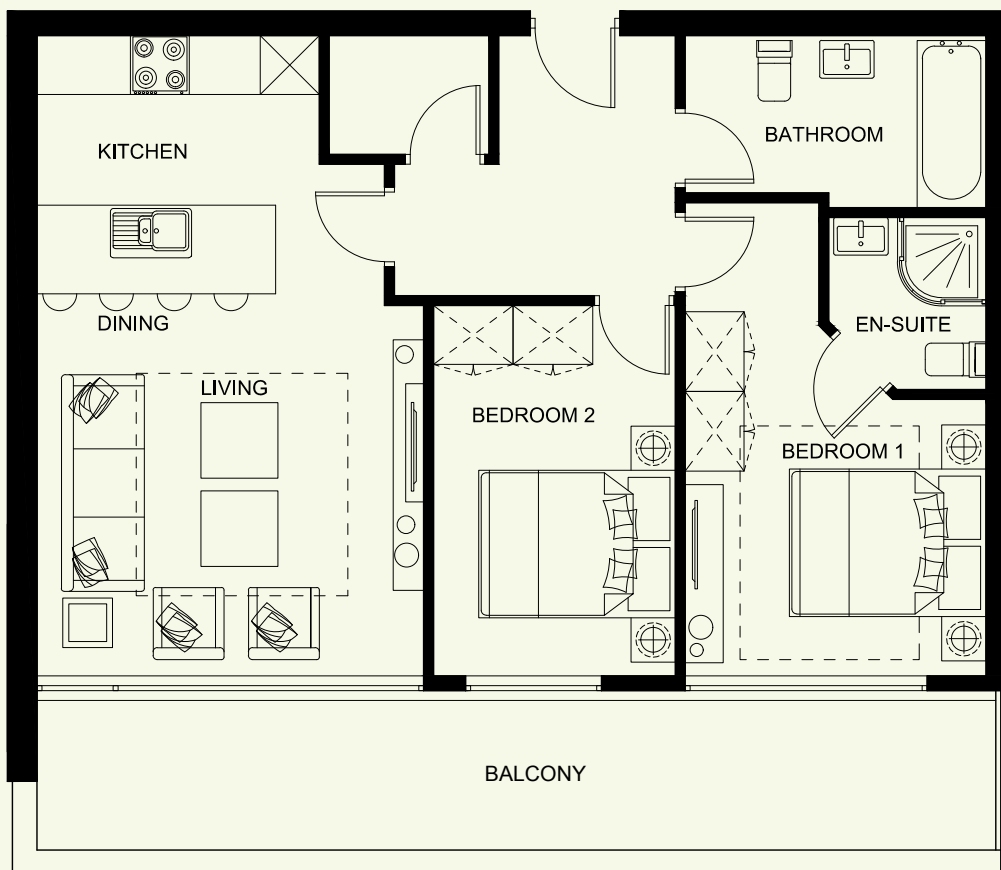


TWO BEDROOM APARTMENT

TOTAL FLOOR AREA: 60.69 Sq M 636 Sq Ft

TYPE P8

APARTMENT NUMBER
506

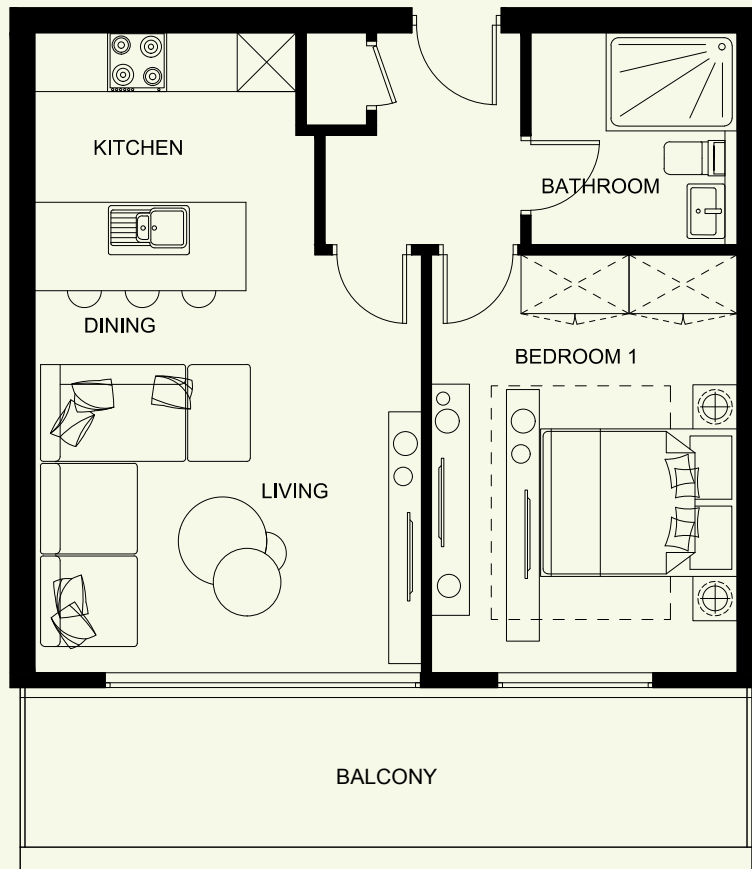


TWO BEDROOM APARTMENT

TOTAL FLOOR AREA: 62.77 Sq M 656 Sq Ft

TYPE P9

APARTMENT NUMBER
505

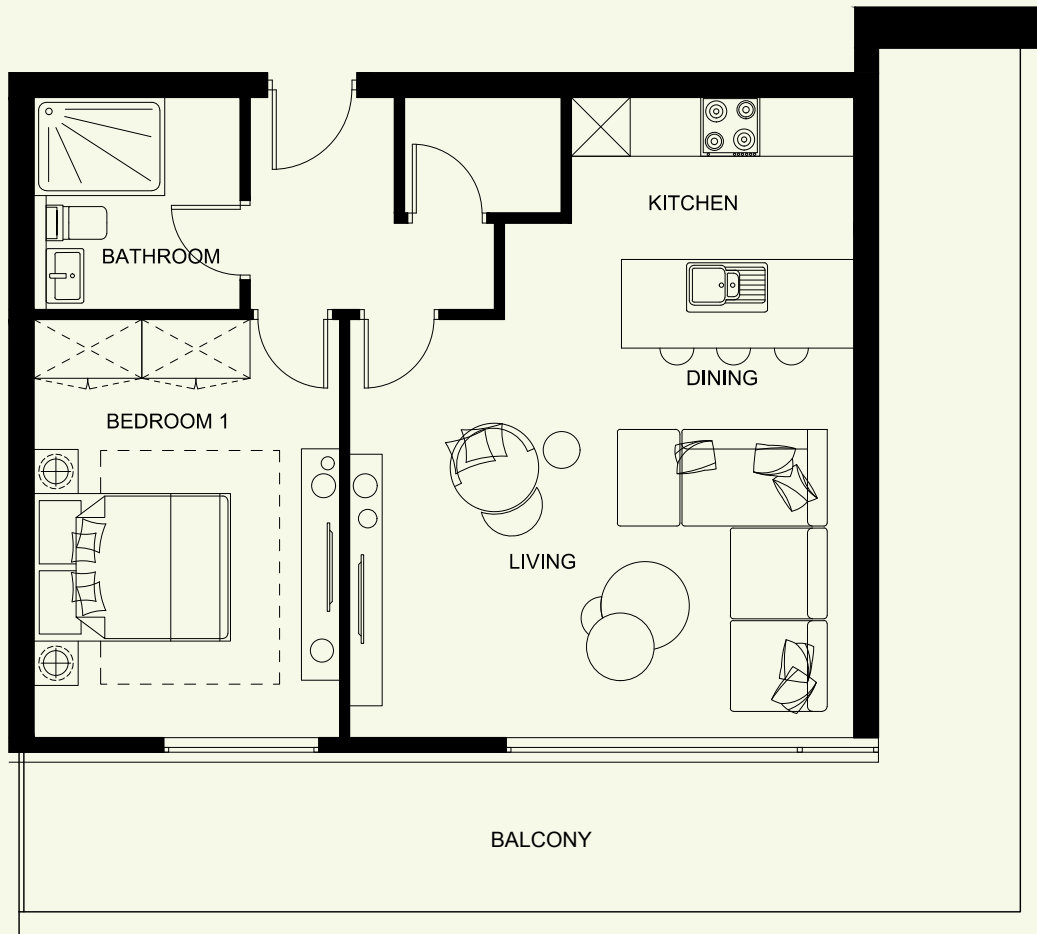


ONE BEDROOM APARTMENT

TOTAL FLOOR AREA: 46.52 Sq M 481 Sq Ft

TYPE P10

APARTMENT NUMBER
504

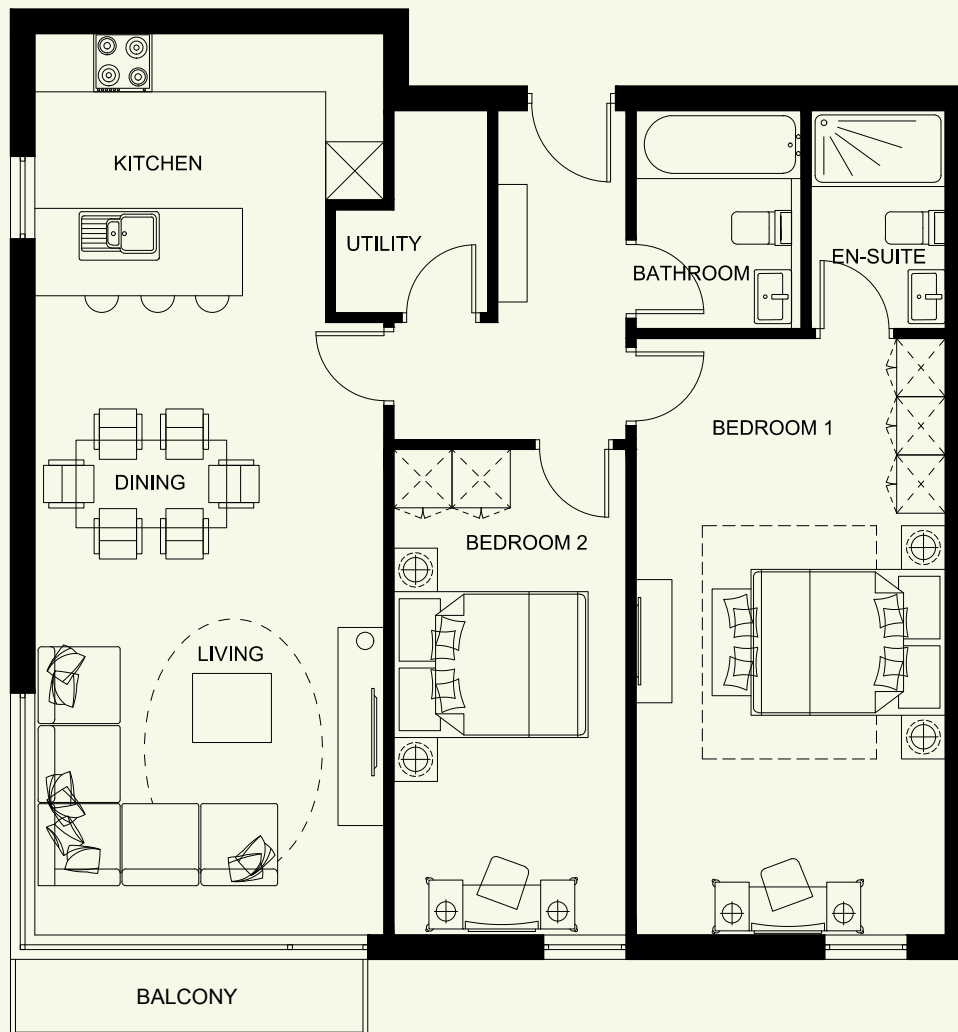


ONE BEDROOM APARTMENT

TOTAL FLOOR AREA: 54.31 Sq M 565 Sq Ft

TYPE S

APARTMENT NUMBER
408

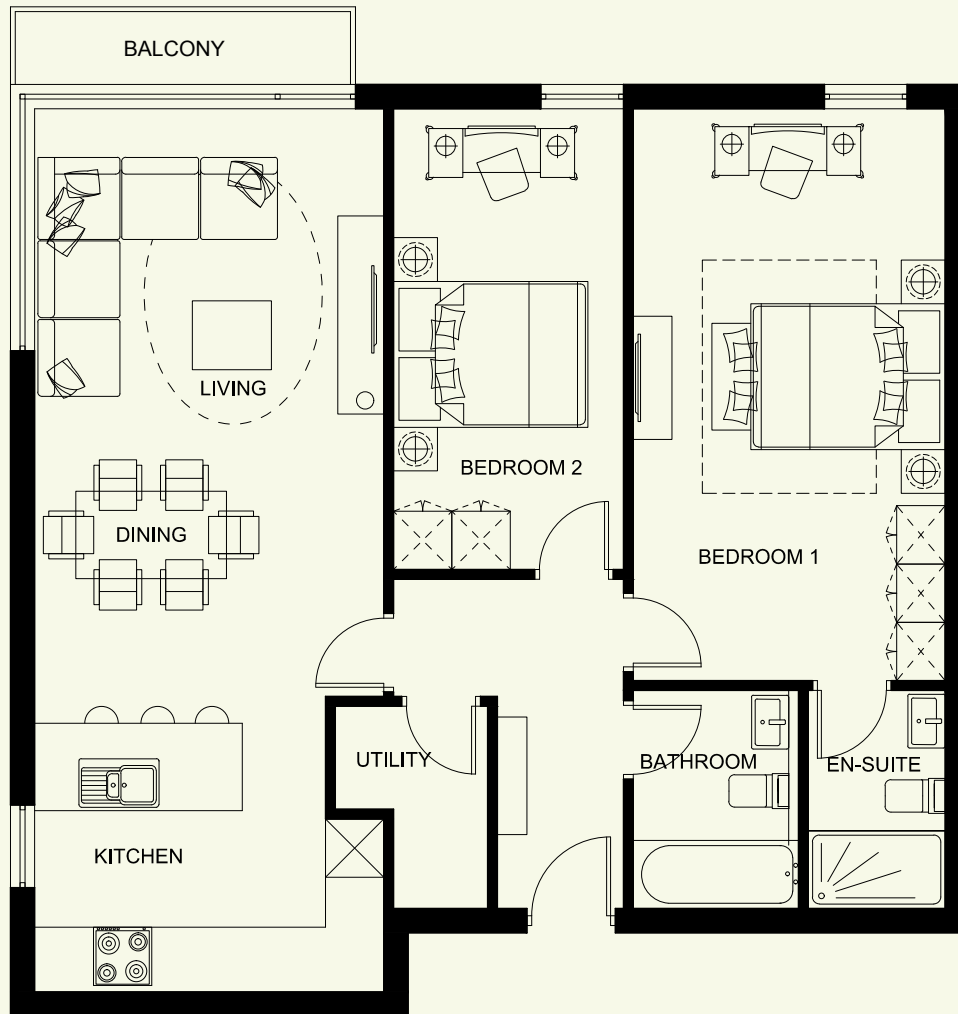


TWO BEDROOM APARTMENT

TOTAL FLOOR AREA: 82.34 Sq M 866 Sq Ft

TYPE S1

APARTMENT NUMBER
401



TWO BEDROOM APARTMENT

TOTAL FLOOR AREA: 80.19 Sq M 843 Sq Ft

Disclaimer: These particulars do not constitute any part of an offer or contract. None of the statements contained in these particulars are to be relied on as statements or representations of fact and intending purchasers must satisfy themselves by inspection or otherwise correctness of each of the statements contained in these particulars. Configurations of kitchens, bathrooms and wardrobes etc. may be subject to alteration from those illustrated without prior notification. Internal walls within each apartment are also subject to change at the discretion of the developer. Purchasers must satisfy themselves as to the current specification at the time of signing legally binding contracts. The Vendor does not make or give, and neither the Selling Agent, nor any person in their employment, has the authority to make or give any representation or warranty whatever in relation to any property. Artist's impressions, computer generated images and photographs are for illustration only. Plans are not to scale and all the dimensions shown are approximate. The development name is purely for marketing purposes and is not a guarantee that the local council will adopt it in the street naming.

SOUTHSIDE
RESIDENCE
— BELFAST, BT9 —



LANYON HOMES

HOUSE BUILDER



028 9030 8855

— www.douganproperty.com —