

PHASE ONE

BOWENS MEWS

LURGAN

3 & 4 BEDROOM DETACHED
AND SEMI DETACHED HOMES

BOWENS LANE
BOWENS MEADOW
BOWENS MEWS

From:
On To:
Through to:


**HILMARK
HOMES**

LOVE
LIVE
GROW



BOWENS MEWS

LURGAN



HILMARK
HOMES





The Developer

Bowens Mews is a quality turnkey development offering new build homes finished to the highest standard.

A beautiful development of 3 & 4 bedroom homes. Bowens Mews offers buyers the opportunity to own their own home on the rural outer edge of Lurgan.

This exclusive location allows for ease of access to local schools, shops and neighbouring towns whilst offering buyers contemporary and stylish, turnkey homes built with traditional craftsmanship.

Whether looking for your first home or a new home in a tranquil, relaxing area, Bowens Mews offers aspirational living through a selection of quality homes to suit all.

Our Developments

- **Old Coach Hill**, Banbridge
- **Millmount Villas**, Banbridge
- **Hartley Hall**, Greenisland
- **The Forge**, Ballygowan
- **Bowen Meadows**, Lurgan
- **Lacehill**, Portadown
- **Spinners Court**, Armagh
- **Gosford View Manor**, Markethill
- **Greenhall Park**, Coleraine
- **Bowens Mews**, Lurgan

Hilmark Homes have brought their experience and expertise to Bowens Mews where they are building on the success of their already established developments Bowens Meadow, Lurgan; Old Coach Hill, Banbridge; The Forge, Ballygowan; Lacehill, Portadown and the prestigious Hartley Hall, Greenisland.

BOWENS MEWS

LURGAN

Specification

As you would expect from such an outstanding scheme, the comprehensive, modern turnkey specification of Bowens Mews offers the very best in terms of quality products and stylish finishes.

Kitchens & Utility Rooms

- High quality units with choice of door, worktop and handle
- Integrated appliances to include gas hob, electric oven, extractor hood, fridge/freezer and dishwasher
- Washing machine
- Concealed under lighting to kitchen units
- Recessed down lighters to ceilings

Bathrooms, En-suites & WCs

- Contemporary white sanitary ware with chrome fittings
- Shower over bath with screen door

Floor Coverings & Tilings

- Co-ordinated ceramic wall tiling between kitchen units
- Ceramic tiled floor to kitchen/dining areas, bathrooms, en-suites and WCs
- Partial tiling to bathroom, en-suites and WCs
- Carpets to lounge, bedrooms, hall, stairs and landings



High Standard Finish

Internal Features

- Internal décor, walls and ceilings painted
- Multi fuel Stove with hearth
- Mains supply smoke detectors
- Mains supply Carbon monoxide detectors
- Moulded skirting and architraves
- Painted internal doors with quality ironmongery
- Comprehensive range of electrical sockets, switches, TV and telephone points
- Wiring for future satellite point
- Firmus fired central heating system
- Integral Alarm System

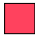

External Features

- Front gardens to be turfed
- Rear gardens leveled and seeded
- Bitmac driveway
- uPVC double glazed windows with lockable system
- Outside water tap
- Boundary fencing to side and rear
- Feature external lighting to front door
- 10 year warranty





Site Plan

-  The Tober — Four Bedroom Detached
Plots: 5, 4, 11
-  The Evan — Three Bedroom Semi Detached
Plots: 6, 7, 12, 13, 14, 15, 16, 17
-  The Corran — Three Bedroom Semi Detached
Plots: 2, 3, 8, 9
-  The Silverwood — Four Bedroom Detached
Plots: 1, 10

LOVE

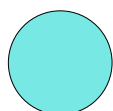
LIVE

GROW





The Tober



Four Bedroom Detached House

Plot: 5, 4, 11

1250 Sq Ft



PHASE ONE



Ground Floor

Lounge	15'5" x 12'4"	4.70 x 3.75m
Kitchen/Dining	19'4 x 17'3"	5.90 x 5.25m
Utility	—	—
WC	—	—



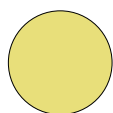
First Floor

Master Bedroom Ensuite	12'2" x 11'8"	3.70 x 3.55
Bedroom 2	10'4 x 10'2"	3.15 x 3.10m
Bedroom 3	10'4" x 8'10"	3.15 x 2.70m
Bedroom 4	7'5" x 6'11"	2.25 x 2.10m
Bathroom	—	—
Store	—	—





The Evan



— Three Bedroom Semi-Detached House

Plot: 6, 7, 12, 13, 14, 15, 16, 17

1095 Sq Ft



PHASE ONE



Ground Floor

Lounge	16'1" x 11'4"	4.90 x 3.45m
Kitchen/Dining	18'3" x 13'7"	5.55 x 4.15m
Utility	—	—
WC	—	—



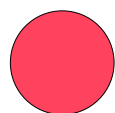
First Floor

Master Bedroom Ensuite	12'12" x 11'4"	3.95 x 3.45m
Bedroom 2	12'6" x 10'4"	3.80 x 3.15m
Bedroom 3	8'8" x 7'7"	2.65 x 2.30m
Bathroom	—	—
Store	—	—





The Corran



— Three Bedroom Semi-Detached House

Plot: 2, 3, 8, 9

900 Sq Ft



PHASE ONE



Ground Floor

Lounge	14'9" x 10'8"	4.50 x 3.25m
Kitchen/Dining	17'5" x 10'6"	5.30 x 3.20m
Utility	—	—
WC	—	—



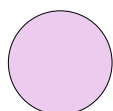
First Floor

Master Bedroom Ensuite	13'0" x 10'2"	3.95 x 3.10m
Bedroom 2	12'6" x 8'10"	3.80 x 2.70m
Bedroom 3	7'3" x 6'11"	2.20 x 2.10m
Bathroom	—	—
Store	—	—





The Silverwood



— Four Bedroom Detached House

Plot: 1, 10

1360 Sq Ft



PHASE ONE



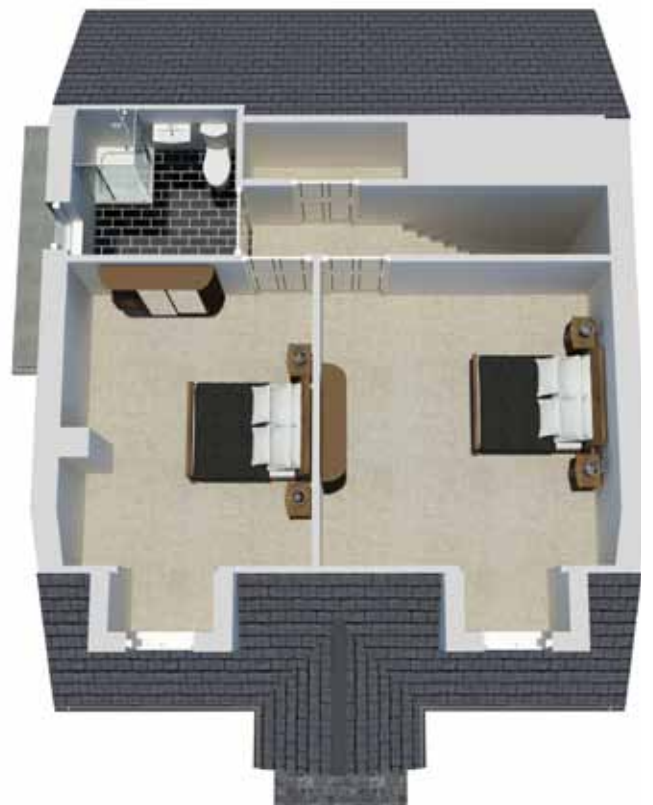
Ground Floor

Lounge	15'11" x 11'2"	4.85 x 3.40m
Kitchen/Dining	16'5" x 13'7"	5.00 x 4.15m
GF Bedroom 3	10'6" x 9'8"	3.20 x 2.95m
GF Bedroom 4	9'6" x 8'2"	2.90 x 2.50m
Utility	—	—
WC	—	—



First Floor

FF Master Bedroom	16'1" x 13'3"	4.90 x 4.05m
FF Bedroom 2	16'1" x 11'2"	4.90 x 3.40m



Location Map



Selling Agents



Jones Estate Agents

High St, Lurgan,
Co Armagh
BT66 8AW

t. **028 3832 2244**

e. info@jonesestateagents.com

www.jonesestateagents.com

Site Location

DIRECTIONS



LOVE
LIVE
GROW

From:	BANBRIDGE ROAD
On To:	BOWENS LANE
From:	BOWENS LANE
Right On To:	BOWENS MEADOW
Through To:	BOWENS MEWS

LOVE
LIVE
GROW

SALES AGENT:



028 3832 2244
www.jonesestateagents.com


**HILMARK
HOMES**

The details enclosed do not constitute any part of an offer or contract. None of the statements contained in this sales brochure is to be relied on as statements or representations of fact and any intending purchaser must satisfy themselves by inspection or otherwise as their correctness. Neither the vendor, selling agent, nor any person employed in the companies has any authority to make or give any representation or warranty whatsoever in relation to this property. All dimensions are approximate and graphic illustrations are for reference purposes only and may be subject to change. All photographs of Hilmark properties used in this publication are from a range of Hilmark Developments and are for illustration purposes only. The Development name 'Bowens Mews' is subject to planning approval and may be subject to change.

www.bowensmews.co.uk